



FRONT FOUR
AT STOWE MOUNTAIN LODGE

YOUR MOUNTAIN. YOUR STYLE. YOU'RE HOME.

FRONT FOUR TYPICAL FOUR-BEDROOM

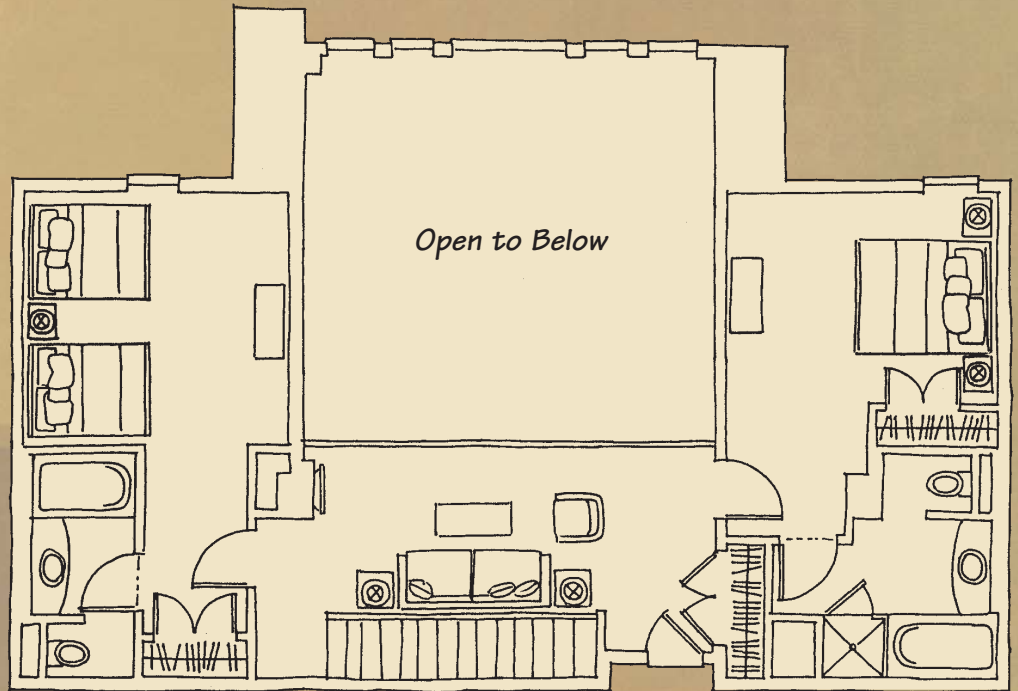
2,875 square feet
on two levels

At Front Four, nothing has been overlooked. The views, location, furnishings, attention to detail, member services, craftsmanship—all thoughtfully choreographed to harmonize with the mountain environment. Everything seems to be in the right place in your Front Four residence. Fully furnished right down to the cork screw

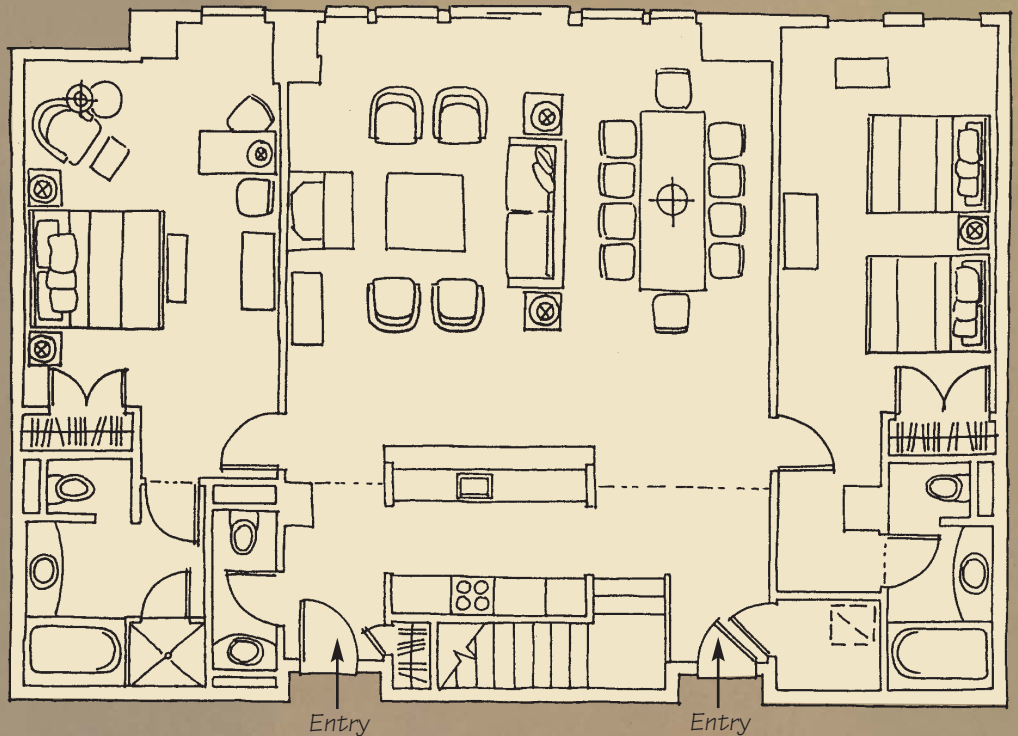
- Central heating and air conditioning
- Nine-foot-plus ceiling heights
- Expansive glass
- Spacious, private balcony
- Clean, efficient gas fireplaces
- Stone foyer and kitchen flooring
- Berber-style carpeting
- Granite counter tops in kitchens and baths
- Washer/dryer
- Fully equipped kitchens
- Wireless internet access
- Solid-core interior doors
- Queen and king beds
- Flat-screen TVs
- Relaxing soaker tubs
- Tile floor, wall and tub surround in every bathroom
- Elegantly furnished and appointed with a luxurious mountain theme

7320 Mountain Road
Stowe, Vermont 05672
Toll Free 877.977.7823
Phone 802.253.0320
Fax 802.253.0051
www.frontfouratstowe.com

Second Level



Main Level



Square footage is approximate and subject to change without notice.